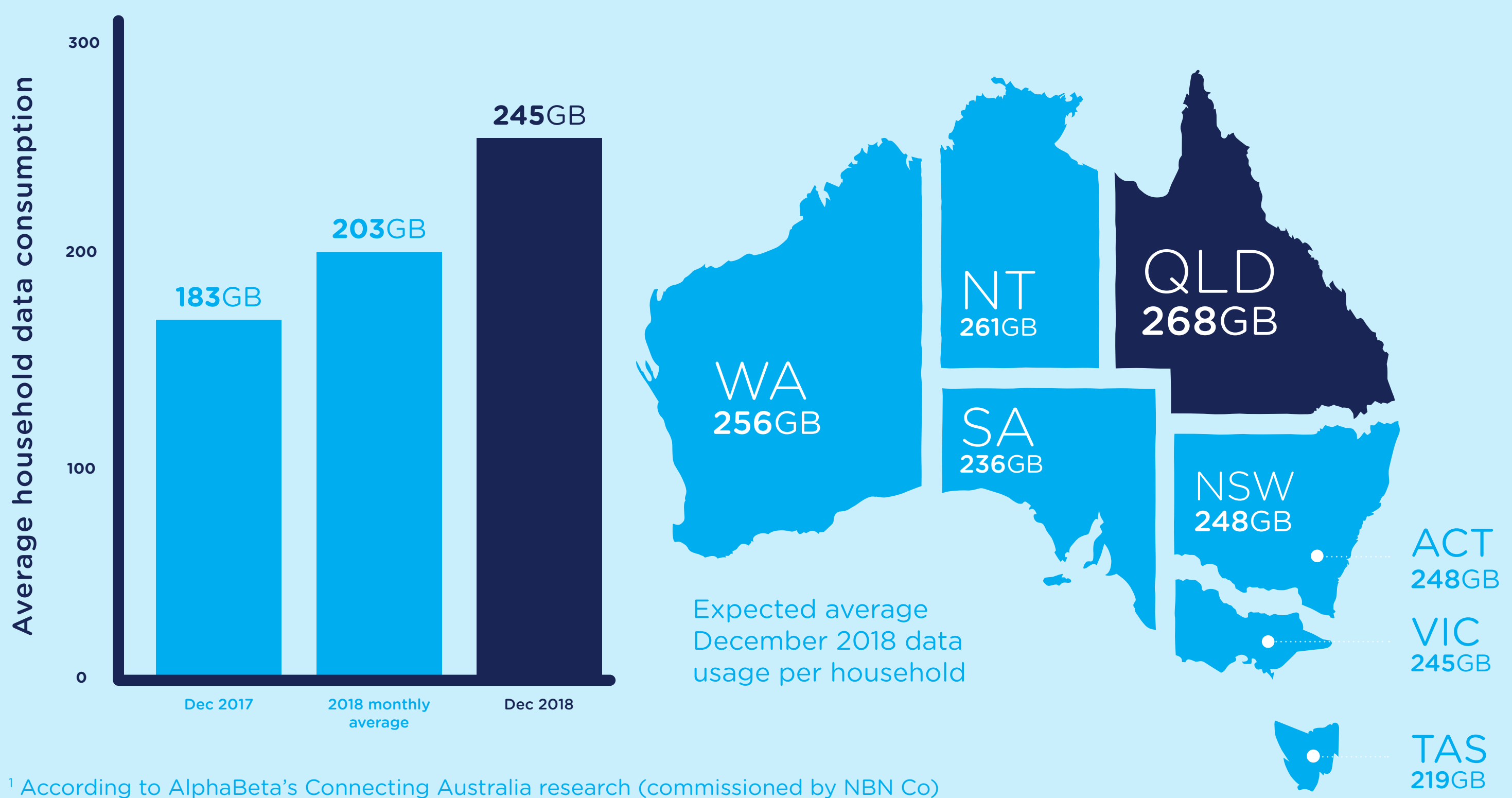




# Heat up your summer streaming

As summer heats up, consumption on the nbn™ broadband access network is expected to increase by more than a third<sup>1</sup>

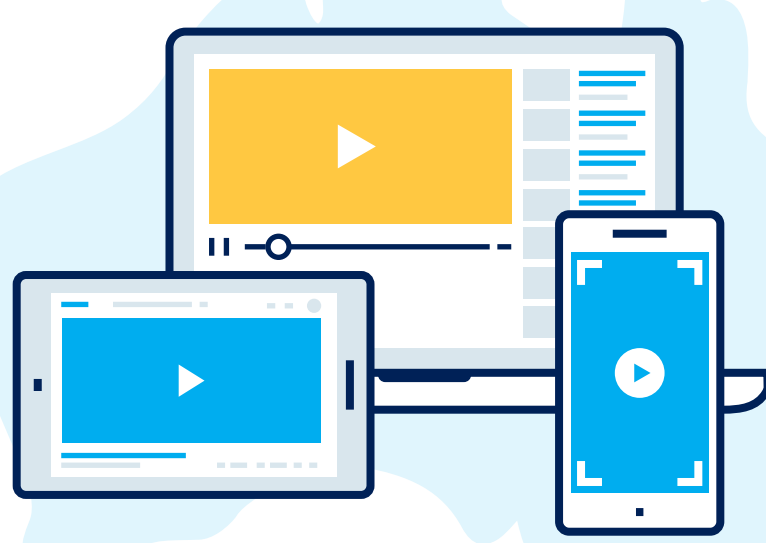


<sup>1</sup> According to AlphaBeta's Connecting Australia research (commissioned by NBN Co)

## Video is the main reason for usage growth<sup>2</sup>



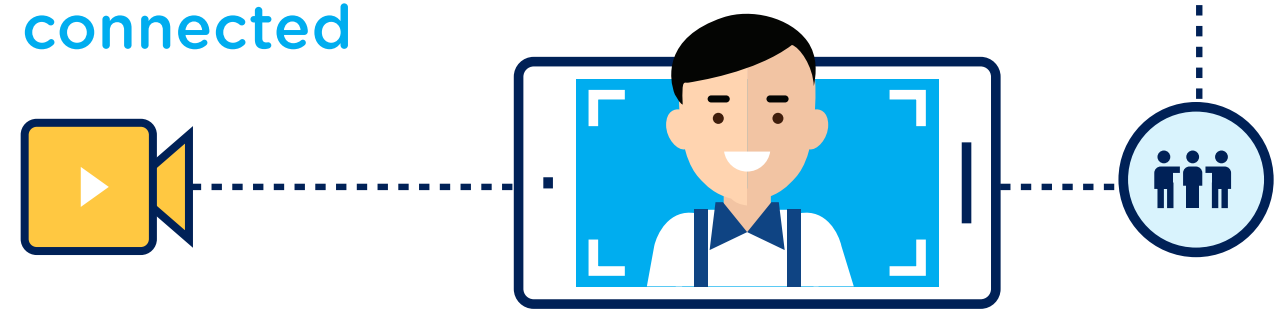
The Subscription Video on Demand (SVOD) Market (E.g Netflix, Stan, Amazon Prime) grew by over 50% last year



Australians took up over 9.1 million subscriptions by the end of June 2018



Users on the nbn™ access network who have subscribed to a streaming service are already using 22% more data per month than those not yet connected



<sup>2</sup> According to Telsyte research (commissioned by NBN Co)



## Keeping in touch with family and friends



nbn™ connected Australians are at least 30% more likely to use the internet to stay in touch with loved ones than non-nbn™ connected Australians<sup>3</sup>

<sup>3</sup> AlphaBeta's Connecting Australia research (commissioned by NBN Co) comparing areas where nbn™ rollout is more than 90% complete and areas where nbn™ rollout is less than 10% complete

## Here are three steps to help improve your home broadband speed this summer<sup>4</sup>

1. Check your usage between 7pm and 11pm
2. Select the right speed from your phone and internet provider
3. Put your modem in the right place

<sup>4</sup> End user experience may vary depending on factors such as an end user's access technology, internet provider, plan and equipment



For more tips on how to help improve your online experience, check out our optimisation page.

An end user's experience, including the speeds actually achieved over the nbn™ broadband access network, depends on the nbn™ access network technology and configuration over which services are delivered to their premises, whether they are using the internet during the busy period, and some factors outside of nbn's control (like their equipment quality, software, chosen broadband plan, signal reception, or how their provider designs its network). Speeds may also be impacted by network congestion on the nbn™ Fixed Wireless network, including during busy periods. Sky Muster™ satellite end users may also experience latency.